



**产品特性/Product Features**

- IP6K9K
- 80A 85°C
- 12-750VDC
- 1000MΩ (1000VDC) , IEC 60664-1
- 

**触点参数 / Contact parameters**

		1a	
		≤1m (at 20A)	
		80A	
		$2 \times 10^{-5}$	
		<b>450V型</b>	<b>750V型</b>
		1000VDC	1000VDC
		800A(320VDC)1	800A(320VDC)1
		36kW	60kW
1)		$1 \times 10^{-4}$ 450VDC, 80A	$1 \times 10^{-4}$ 750VDC, 80A
		$7.5 \times 10^{-4}$ 450VDC, 80A	$7.5 \times 10^{-4}$ 450VDC, 80A
2)		80A:	
		120A:30min	
		160A:1min	
		300A:10s	

1) 23°C, 0.6s:5.4s.

2) 85°C, 20 mm².

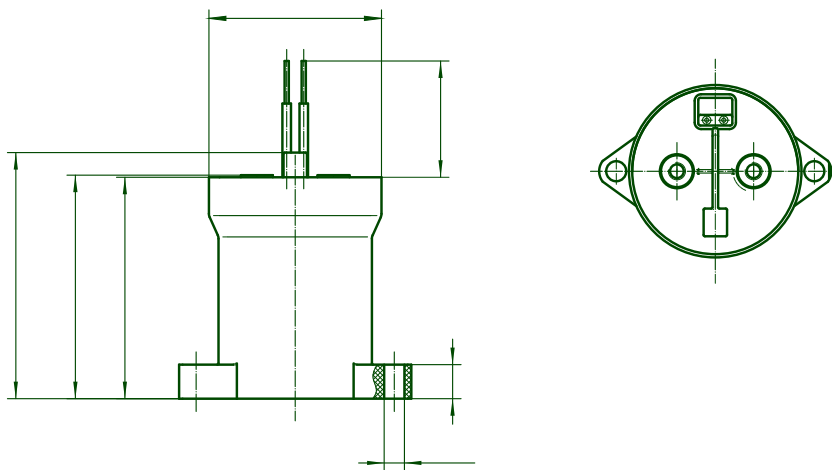
性能参数 / Performance parameters	
	1000MΩ(1000VDC)
	3000VAC 1min
	3000VAC 1min
( )	≤30ms
( )	≤10ms
	196m/s <sup>2</sup>
	490m/s <sup>2</sup>
	10Hz ~ 500Hz 49m/s <sup>2</sup>
	5% ~ 85%RH
	-40°C ~ 85°C
	5M
	225g

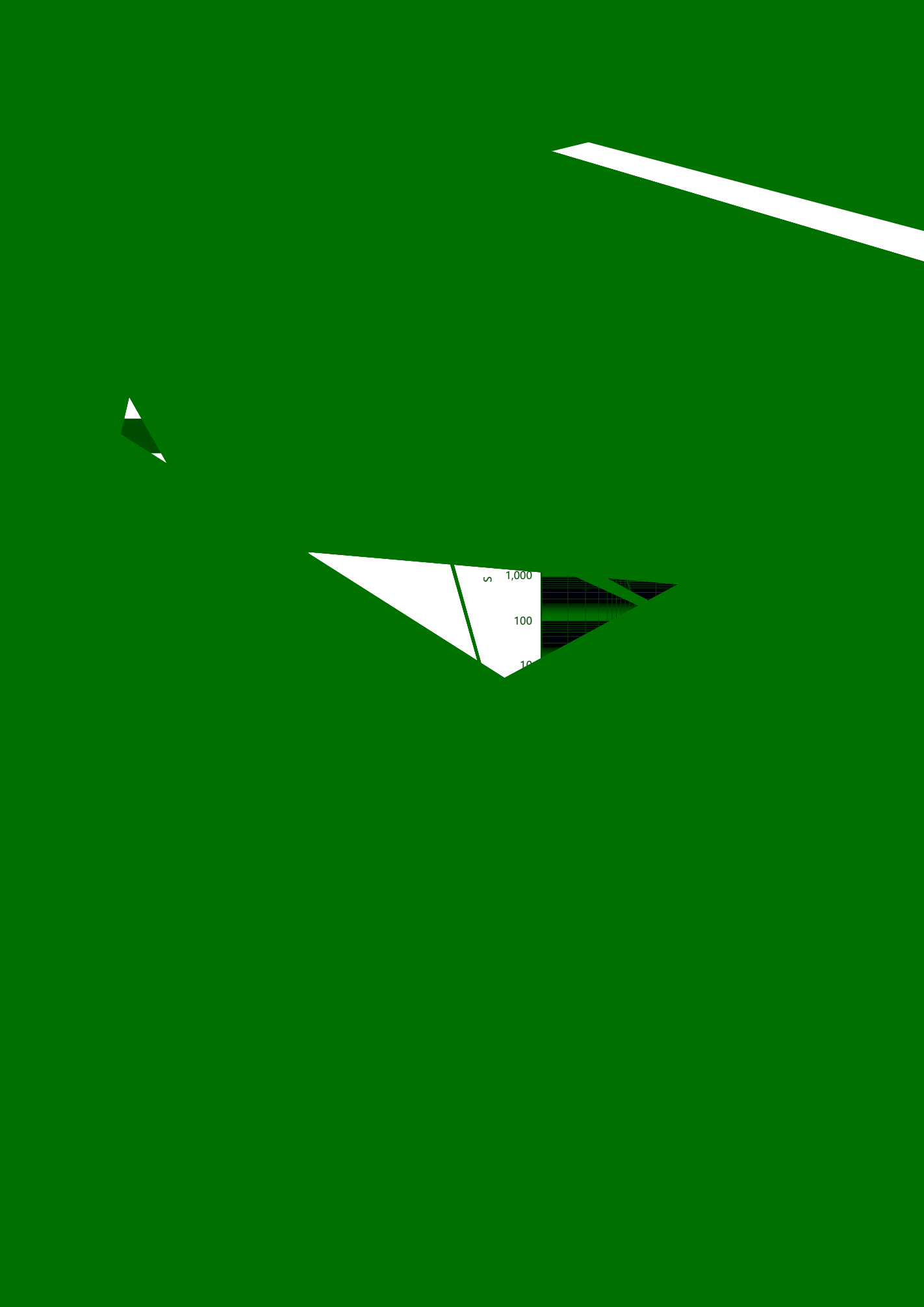
线圈参数 / Coil parameters			
100%	50%	100%	W
12	9	1.2	5.5W
24	≤18	2.4	6W

-40°C ~ 85°C)

外形图、安装孔尺寸 / Outline drawing, mounting hole size

/Unit mm





2 1,000  
100  
10